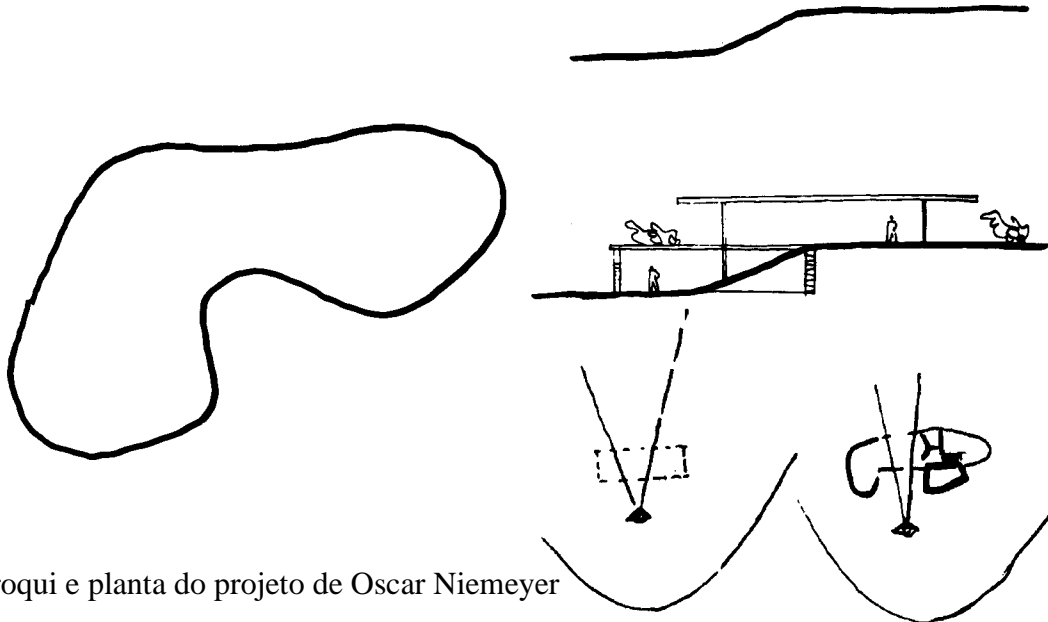
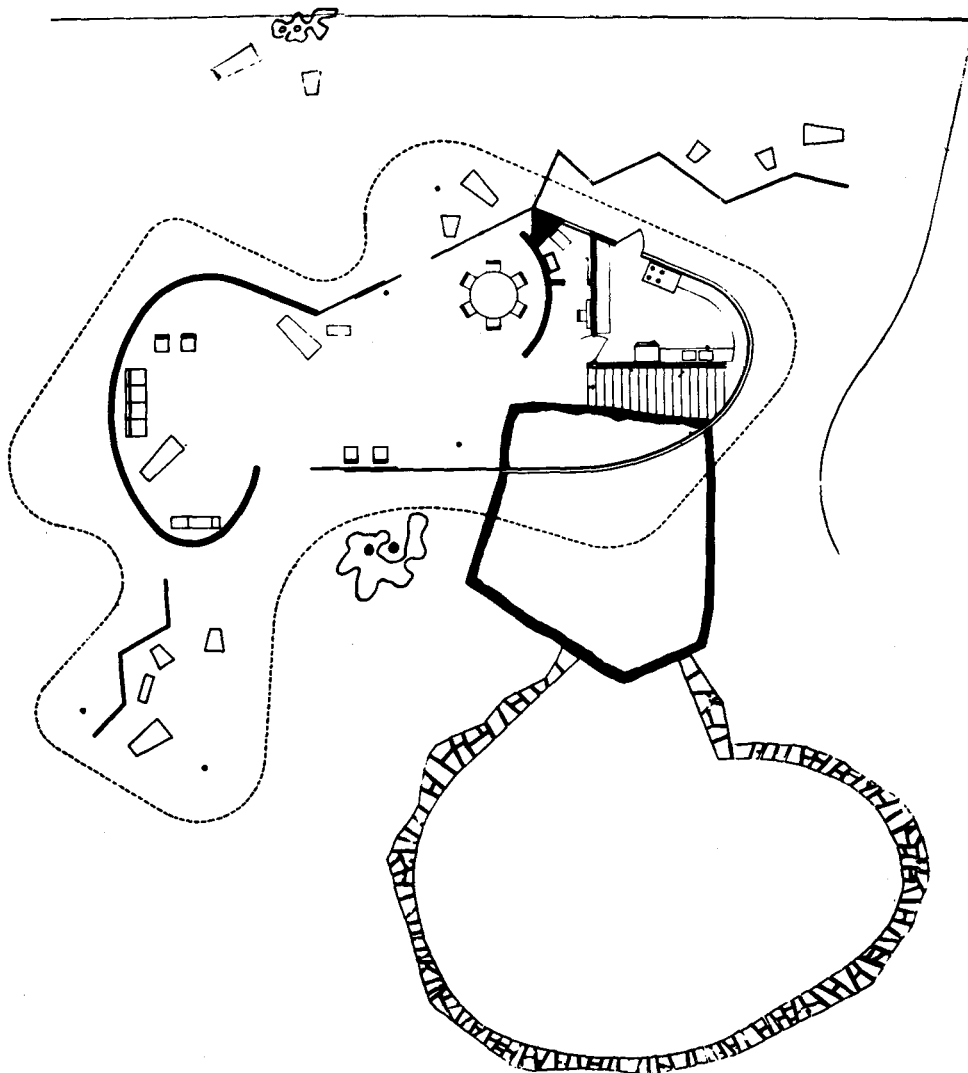


**ANEXO 7**

**ESQUEMA DE MONTAGEM DE MODELO  
CASA DAS CANOAS**



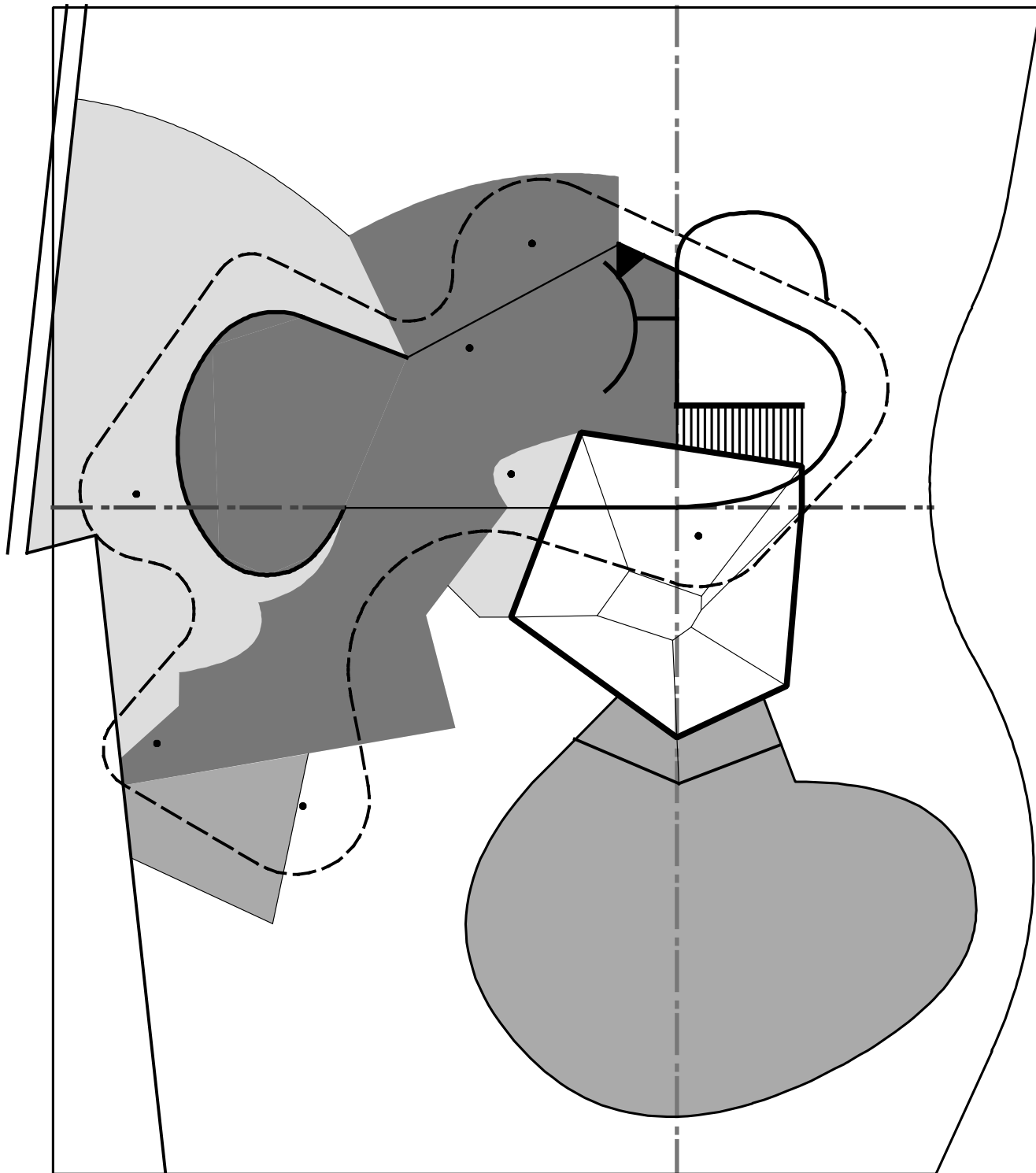
Croqui e planta do projeto de Oscar Niemeyer



**PAVIMENTO DE ACESSO**

*CASA DAS CANOAS • Habitação Unifamiliar, Estrada das Canoas Rio de Janeiro*

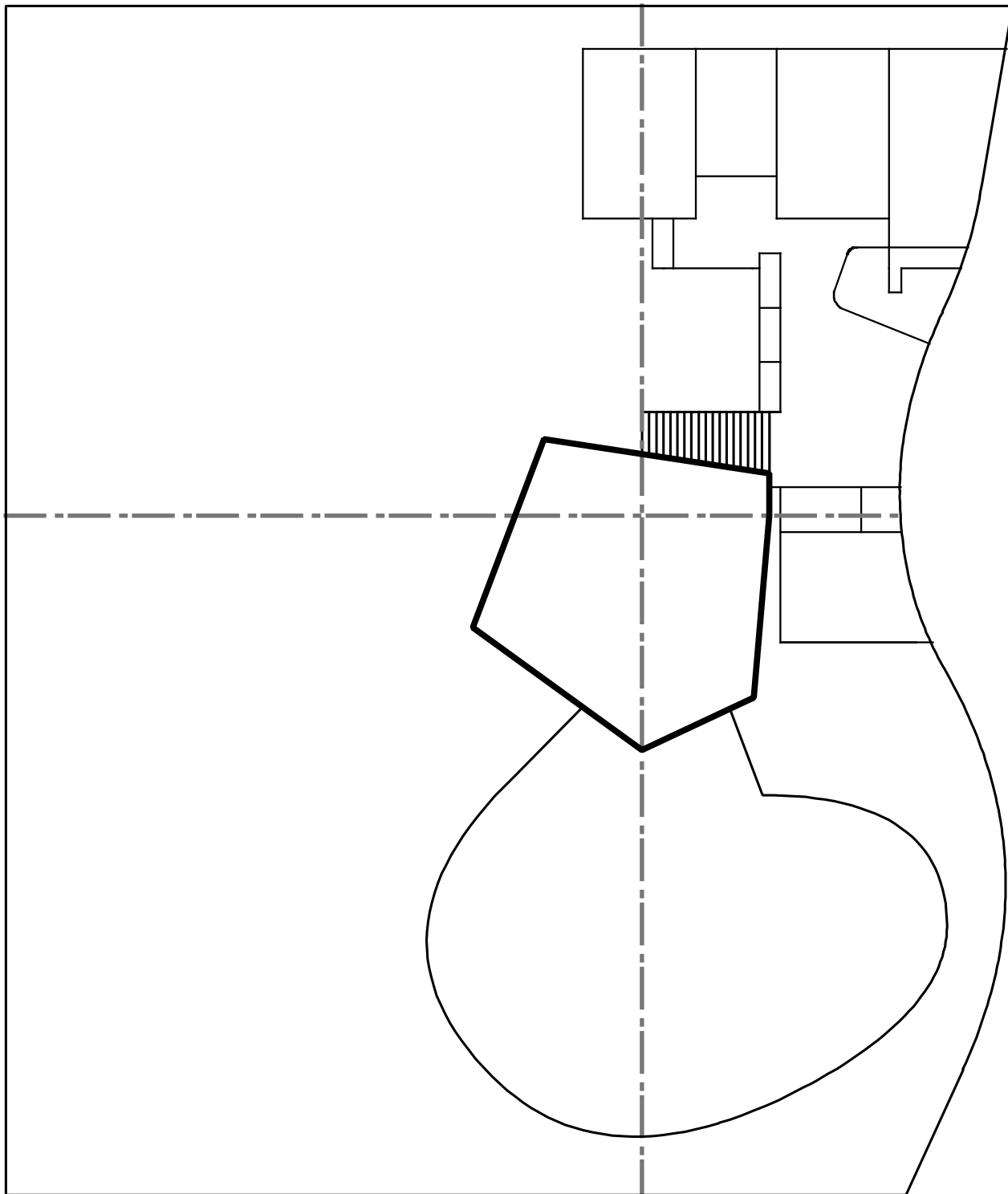
*Arquiteto Oscar Niemeyer*



**PAVIMENTO INFERIOR**

*CASA DAS CANOAS • Habitação Unifamiliar, Estrada das Canoas Rio de Janeiro*

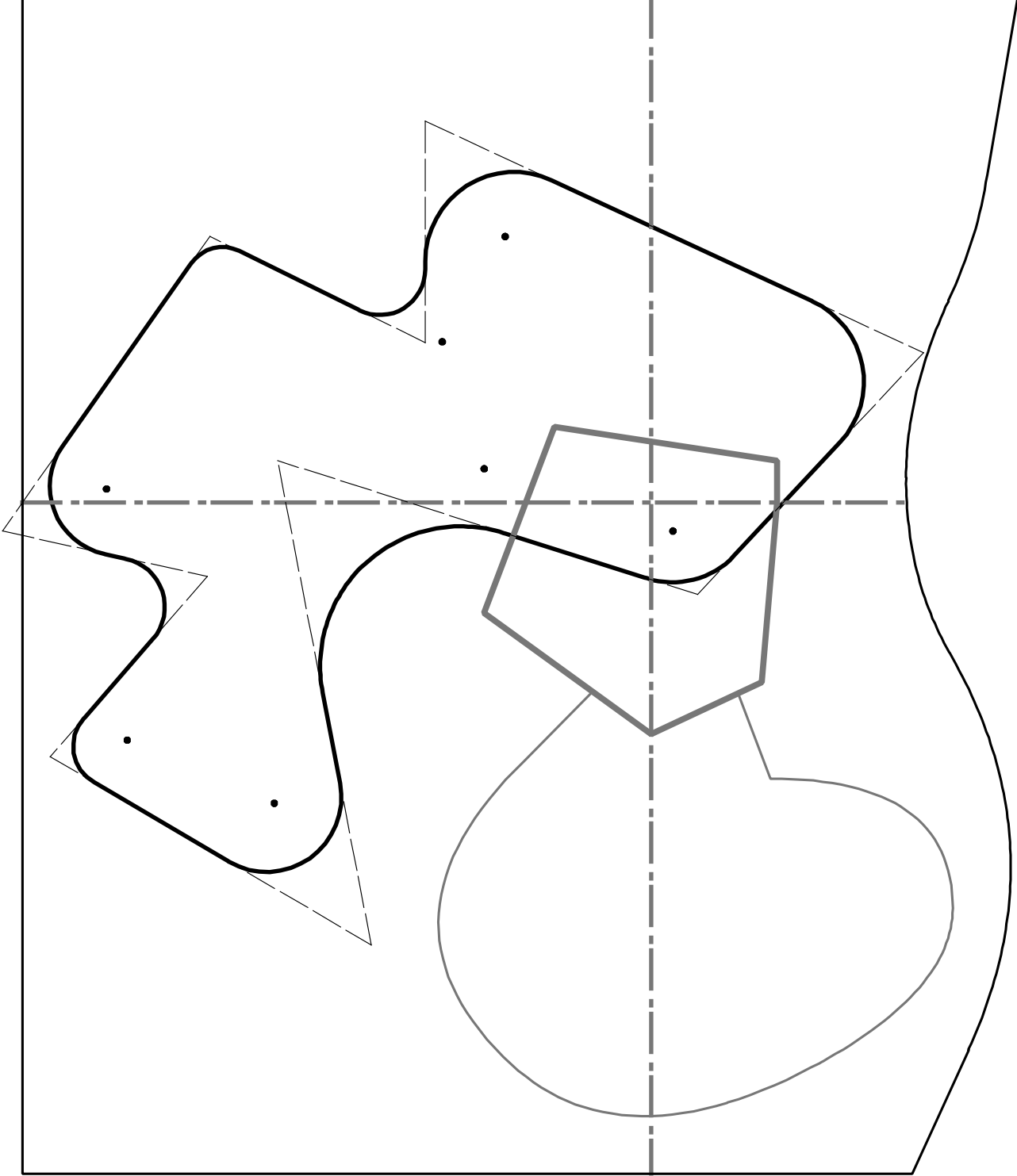
*Arquiteto Oscar Niemeyer*

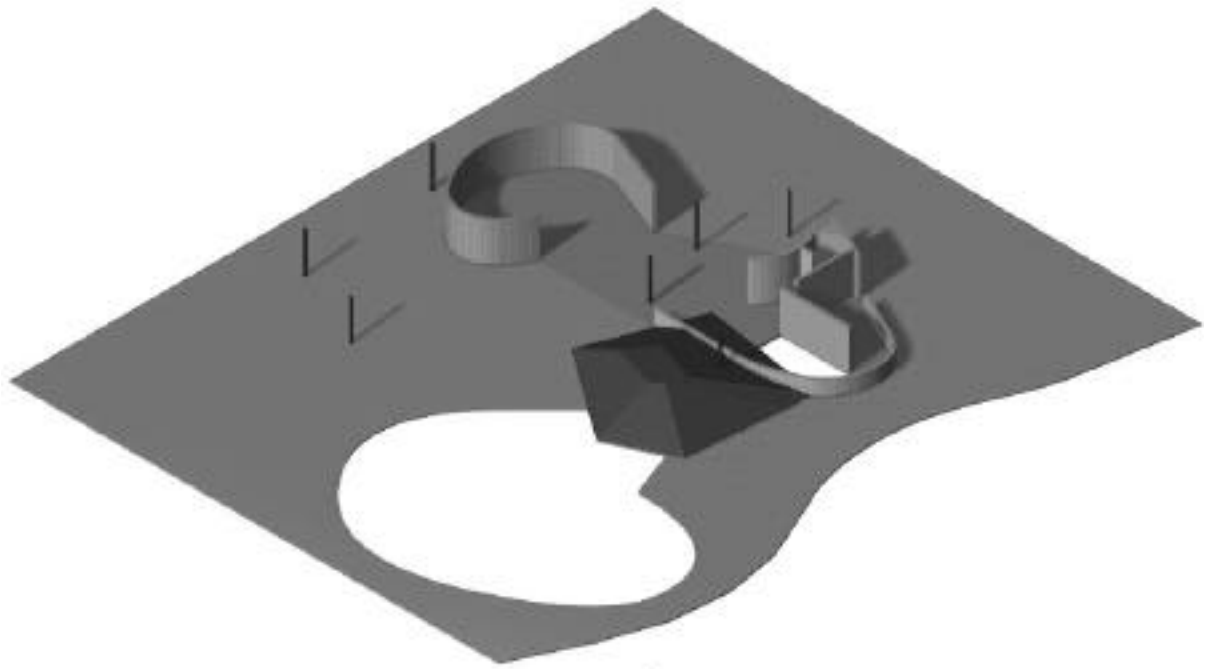


**COBERTURA**

*CASA DAS CANOAS • Habitação Unifamiliar, Estrada das Canoas Rio de Janeiro*

*Arquiteto Oscar Niemeyer*



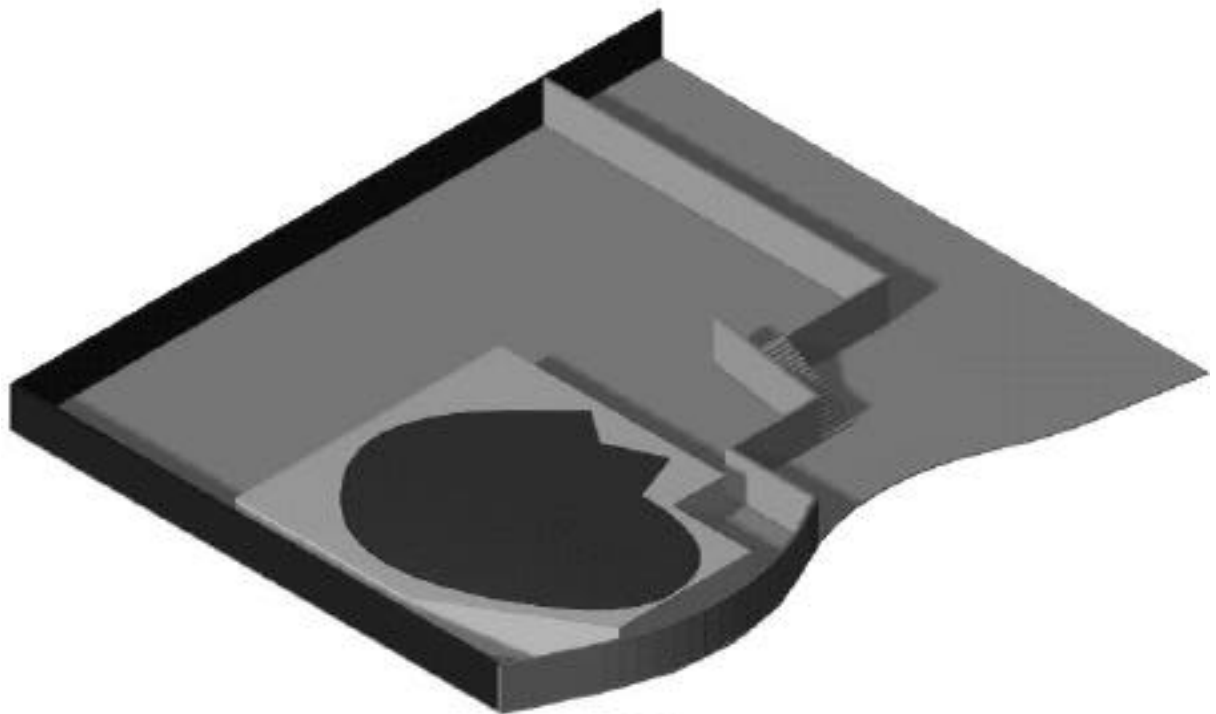


**PAVIMENTO DE ACESSO**





**PAVIMENTO INFERIOR**



**BASE**

